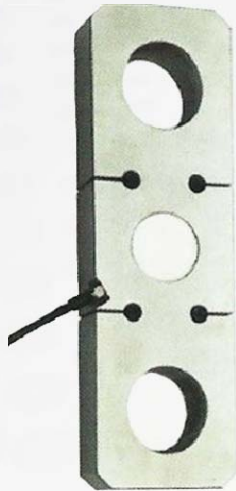


TRACTION LOAD CELL

TECHNICAL SPECIFICATIONS



Rated output 2mV/V
 Nonlinearity $\leq 0.03\%FS$
 Hysteresis $\leq 0.03\%FS$
 Repeatability $\leq 0.02\%FS$
 Zero balance $\leq 1\%FS$
 Creep $<0.02\%FS/30min$
 Zero temperature coefficient $\leq 0.04\%FS/10^{\circ}C$
 Rated output temperature coefficient $\leq 0.04\%FS/10^{\circ}C$
 Input resistance $385\pm 10\Omega$
 Output resistance $350\pm 3\Omega$
 Insulation resistance $\geq 5000M\Omega$
 Safe overload 150%FS
 Recommended supply voltage 5~15V
 Cable flexible (4 core 3meter)

Load Cells are designed to work with tensile shear sensing element.
To be used with Shackles.

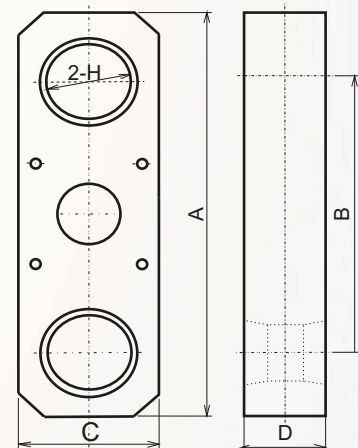
Available from 1T to 100T capacity

Fabricated using alloy steel

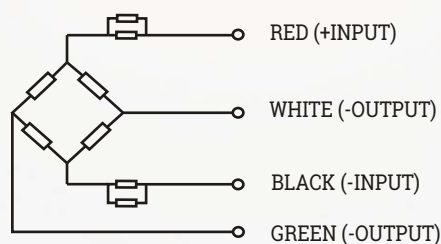
Processed for anti-corrosion with Electroless Nickel

IP 66 Protection.

Capacity Ton	Size(mm)				
	A	B	C	D	2-H
5	190	137	55	30	27
10	245	168	70	36	41
20	312	206	94	45	54
30	370	246	114	50	60
50	460	309	140	60	73
100	580	289	180	80	99
150	690	456	220	90	112
200	800	534	250	100	134



Connection Diagram:



Speed-O-Controls Pvt. Ltd.

H. O. Unit - I : C-15/16, Nand Jyot Industrial Estate,
 Andheri-Kurla Road, Mumbai - 400072,
 Tel : (022) 42469700-30, 28518512-3-4,
 Fax : (022) 42469797/ 28518516,
 E-mail : sales@socgroup.in

Visit us at : www.speedocontrols.com

Unit - II : Plot No. 4912, G. I. D. C., Phase IV,
 Vatva, Ahmedabad - 382445
 Tel.: (079) 40083201/2/3/4,
 Fax : (079) 25841056,
 E-mail : sales.amd@socgroup.in